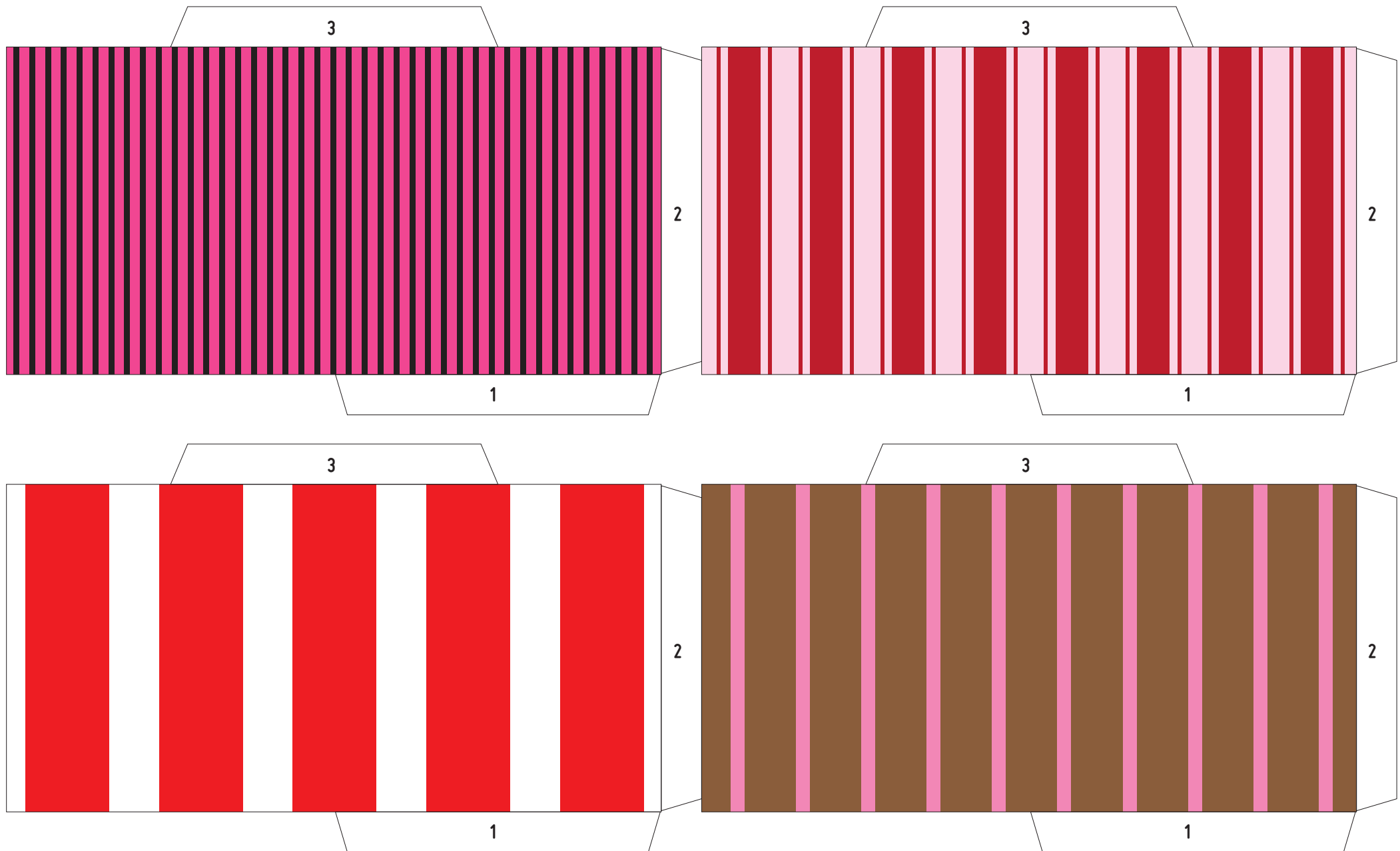


Candy Garland

Cut out a big bundle of the little sweets. Glue them like this: Fold the flaps inwards. Use flaps 1. and 2. to glue them into a little 'bag' but do NOT press the little bag flat. Leave it 'round' and open. Let it dry. You close the bag with glue on flap 3, making the triangular candy form. When all the candies are ready, pull them on a suitable string or narrow silk ribbon. Use a long upholstery needle or a bit of wire to help.



CandyGarland

Cut out a big bundle of the little sweets. Glue them like this: Fold the flaps inwards. Use flaps 1. and 2. to glue them into a little 'bag' but do NOT press the little bag flat. Leave it 'round' and open. Let it dry. You close the bag with glue on flap 3, making the triangular candy form. When all the candies are ready, pull them on a suitable string or narrow silk ribbon. Use a long upholstery needle or a bit of wire to help.

